

A NEW WORLD IN GAMMA RADIORAPHY:
EXERTUS DUAL 120 PROJECTOR



Rated for Ir192 & Se75

PRODUCT OVERVIEW

The Exertus Dual 120 Projector has the ability to accept Iridium 192 sources or Selenium 75 sources. This projector offers the latest design that makes it flexible, light and yet compact.

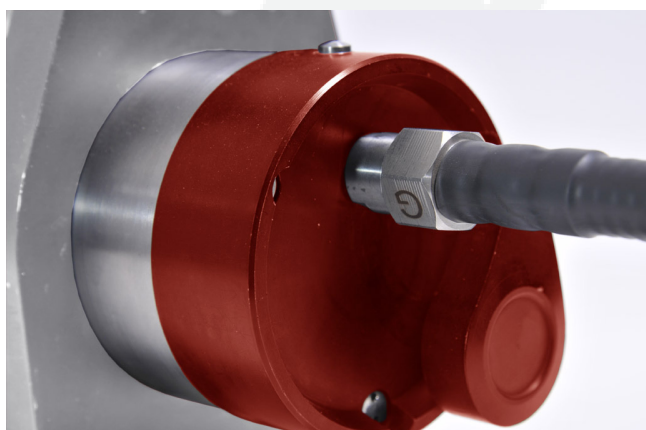
The Exertus Dual 120 Projector is lighter than most of its competitors; it offers a compact design that is very user friendly.

The Exertus Dual 120 Projector integrates an improved source channel based on a new helicoidal design, which makes maintenance easier. It also allows smoother movement of the source assembly inside the device, making it easier for the operator and improving safety.

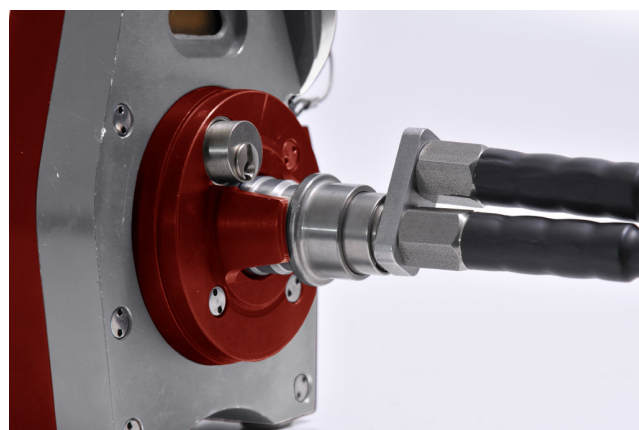
The Exertus Dual 120 is ISO3999:2004 compliant.

EASY TO OPERATE & CONNECT

Connection & operation with Guide Tube and Winder is very quick and easy to set-up.



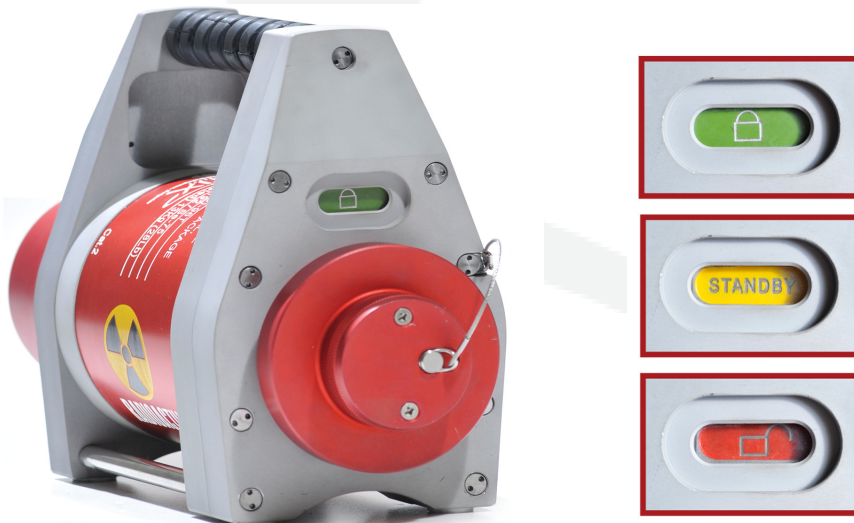
Connection of the Guide Tube
made easy*



Connection of the Winding Mechanism
made easy*

**(For further details, please request our Operations Manual)*

PRODUCT SAFETY



Safety is an integral part of the design and includes the following features:

- Automatic Source Assembly Locking Mechanism.
- The projector can only be locked and disconnected, once the Source Assembly is secured in a safe position.
- 3 colour signal indicator system:
 - Source Assembly is secured and the Projector is locked.
 - Projector is unlocked and Source Assembly Locking Mechanism is ready to be released.
 - Source Assembly Locking Mechanism is released and ready to expose.

THE INDUSTRIAL PACKAGE CONSISTS OF:

- The Dual 120 Isotope Projector including Source Assembly
- Gammatec Winding Mechanism
- Gammatec Guide tube
- 60° Directional Collimator
- Guide Tube Coupling
- Source terminal
- Wrench
- Go/No-Go gauge
- Emergency Shipping Plug
- Operation Manual

Note: Gammatec can supply all of the above accessories, including sealed radioactive sources. Please enquire at any of the branches below for more technical details.

TECHNICAL SPECIFICATIONS, ACCESSORIES & RELATED PRODUCTS:

EXERTUS DUAL 120 SPECIFICATIONS:

Basic Construction Standards

ISO 3999 compliant

Isotopes

Ir-192 or Se-75 under special form

Ir-192 half-life: 73.8 days

Se-75 half-life: 119.8 days

Activity

Ir-192: 4.44 TBq (120 Ci)

Se-75: 4.44 TBq (120 Ci)

Surface Dose Rate

Max. 2 mSv/h

Total Weight

22 kg (48.5 lb)

DU Weight

13 kg (28 lb)

Dimensions

Length: 302 mm (11.89")

Width: 124 mm (4.88")

Height: 207 mm (8.15")

Material Used

Outer shell: CrNi steel

Shielding: Depleted Uranium

Labyrinth; Tungsten Heavy Alloy

Flanges: Aluminium

Temperature Range

-40 °C up to +40 °C with relative ambient
air humidity of 95% at a temperature of
+35 °C

ACCESSORIES:

Reel Type Remote Controls:

Lengths: 7.62m, 10m, 15m

All fittings made out of stainless steel

Guide Tubes:

Lengths: 2.1m, 3m

Stainless steel source terminals

Collimators:

A) 360°

Diameter: 44 mm

Length: 77 mm

Aperture: 360° x 20°

Material of Construction: Tungsten Heavy
Alloy encased in Stainless Steel Shell

B) 60°:

Diameter: 38 mm

Length: 48 mm

Aperture: 60°

Material of Construction: Tungsten Heavy
Alloy

RELATED PRODUCTS:

Exertus 40, 80 & 100 Circa Projector

Exertus Selen EKO Projector

Exertus VOX Projector

**Please enquire at one of the offices below if you
require more technical detail about one of these
projectors*

Gammatec Aseana
Tel: +603 5635 9947
Email: gm@gammatecsea.com

Gammatec Middle East
Tel: +971 4 341 3667
Email: gme@gammatecme.com

Gammatec South Africa
Tel: +27 (16) 423 7731
Email: local.admin@gammatecsa.com
int.sales@gammatecsa.com

Russell Fraser Sales P/L (Australia)
Tel: +612 9545 4433
Email: rfs@rfsales.com.au
Web: www.rfsales.com.au

