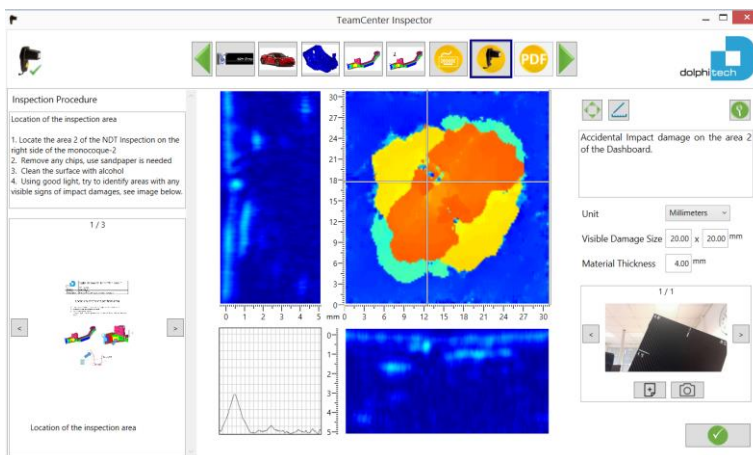


## DolphiCam TeamCenter

DolphiCam TeamCenter is a software that supports a distributed, co-operative model where NDT experts and inspectors work together in the same platform. This enables Non-experts located worldwide to perform high-quality inspections following the procedure created remotely by qualified personnel.



Experts create inspection libraries that contain inspection routines organized in a hierarchical structure. Inspection libraries can be distributed to NDT-teams worldwide for execution. A DolphiCam TeamCenter NDT inspection procedure contains information how a specific area of a product should be inspected, described through textual instructions, pictures and DolphiCam settings.

The DolphiCam camera settings are tailored for the given material and geometry. The inspector can perform multiple inspections as needed, and make inspection reports for evaluation of repair strategies or evaluation by an expert.

TeamCenter enables organizations to bring the expert knowledge in NDT out to sites where quality problems need to be detected and rectified immediately. Businesses will save time, money and make more quality products.

### Benefits

- Enabling Non-experts to perform high-quality NDT
- Easy to use
- Automatic reporting
- Truly scalable NDT for distributed organizations
- Save time and money by reducing inspection process

### Features

- Embeds DolphiCam functionality into inspection procedures
- Configurable camera settings
- “Traffic light” color palette
- Powerful navigation
- Optimized for Windows tablets



### Minimum Requirements

- Microsoft Windows 7 or 8
- i3 dual core processor
- 4 Gb RAM
- 1152 x 864 screen resolution
- Internet Explorer 8.0